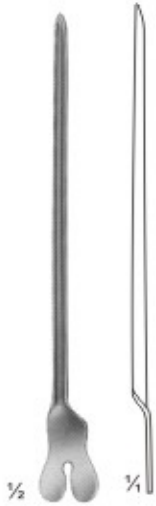


# Probes Sonden



**05-147** 130 mm  
**05-148** 145 mm  
**05-149** 160 mm  
Directors



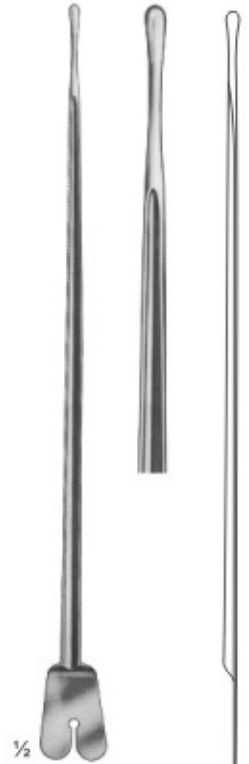
**05-150**  
**DOYEN**  
145 mm  
Directors



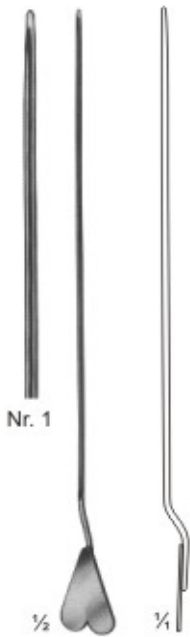
**05-151**  
**NELATON**  
160 mm  
Directors



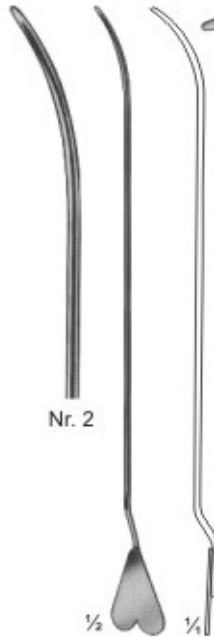
**05-152**  
Director with tip  
Diam. of tip 3,3 mm  
140 mm



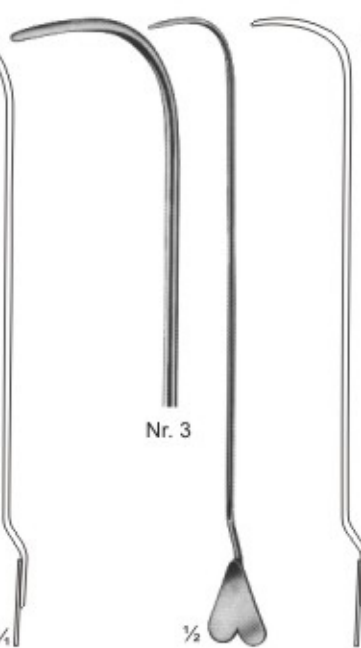
**05-153**  
**BRODIE**  
Director with tip,  
Diam. of tip 3,5 mm  
200 mm



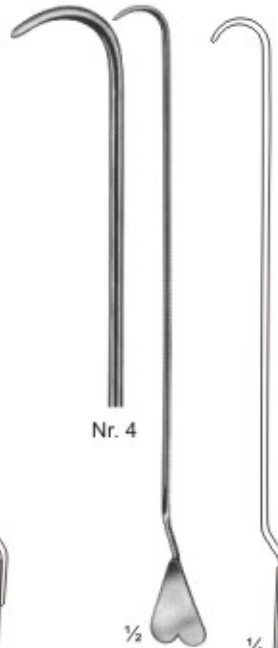
**05-154**  
**LOCKHART-MUMMERY**  
165 mm



**05-155**  
**LOCKHART-MUMMERY**  
165 mm



**05-156**  
**LOCKHART-MUMMERY**  
165 mm



**05-157**  
**LOCKHART-MUMMERY**  
165 mm



**05-158**  
Director with wire  
loop, malleable  
190 mm

# Probes Sonden



**05-199** 2,5 mm  
**05-200** 2,5 mm  
**05-201** 3,0 mm

1/2

**05-159** 145 mm  
**05-160** 160 mm  
**05-161** 200 mm  
Probes with eye



1,5 mm

1/2

**05-162**  
Myrtle leaf probe  
145 mm



2,0 mm

1/2

**05-163** 130 mm  
**05-164** 145 mm  
**05-165** 160 mm  
**05-166** 180 mm  
**05-167** 200 mm



1/2

**05-168**  
Probes



1/2

**05-169**  
Double ended probe,  
malleable, diam. of tips  
3 mm with hole  
190 mm



**05-170**

Double ended probes,  
tin, malleable,  
diam. of tips  
3,5 mm with hole  
250 mm, 300 mm



1/4

**05-171**  
Double ended probes,  
tin, malleable,  
diam. of tips 4 mm  
400 mm



1/2

$\varnothing$  tip  
**05-172** 1,5 mm  
**05-173** 2,0 mm  
**05-174** 2,5 mm  
300 mm

# Suturing Instrument Set, Pocket Instrument Set Wundnahtbesteck, Chirurgisches Taschenbesteck



## 05-175

Suturing instruments set, in metal case consisting of: Scissors, curved, sharp/sharp, 115mm  
25 MICHEL clip, 16 x 3mm  
1 Delicate tissue forceps, 130mm  
1 Scalpel, bellied  
1 MATHIEU needle holder, 140mm  
1 Perforated metal case, stainless containing:  
1 Suture needle  
1 item 1 item



## 05-176

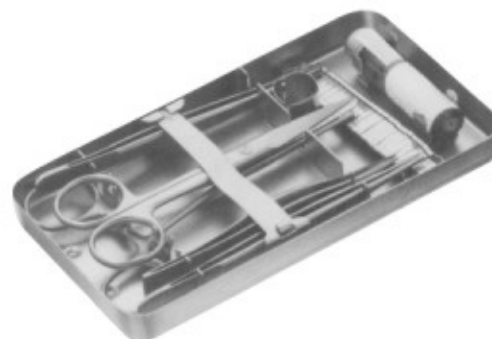
Pocket instrument set, in metal case consisting of:

### Bottom tray

1 MATHIEU needle holder, 140mm  
1 MICHEL clip forceps, combined  
1 Myrtle leaf probe, 130mm  
1 Sharp double curette  
1 Skin hook  
1 Detachable scalpel handle, no.4  
1 Perforated metal case, containing  
6 Scalpel blades  
1 Perforated metal case, stainless, containing  
1 Suture needle  
1 item  
1 item

### Top tray

1 Tissue forceps, 130mm  
1 KOCHER haemostatic forceps, 130mm  
1 Straight surgical scissors, 130mm  
1 Dissecting forceps, 130mm  
1 FEILCHENFELD splinter forceps, 115mm  
25 MICHEL clip, 16 x 3mm  
1 Flacon of suture skin, sterile in alcohol



## 05-177

Pocket instrument set, in metal case consisting of:

### Bottom tray

1 MAYO-HEGER needle holder, 150mm  
1 MICHEL clip forceps, combined  
1 Myrtle leaf probe, 130mm  
1 Sharp double curette  
1 Skin hook  
1 Detachable scalpel handle, no. 4  
1 Perforated metal case, consisting  
6 Scalpel blades  
1 Perforated metal case, stainless, consisting:  
1 Suture needle  
1 item. & 1 item

### Top tray

1 Tissue forceps, 130mm  
1 CRILE haemostatic forceps, 140mm  
1 Straight surgical scissors, 130mm  
1 Dissecting forceps, 130mm  
1 FEILCHENFELD splinter forceps, 115mm  
25 MICHEL clip, 16 x 3mm  
1 Flacon of suture silk, sterile in alcohol

